



# IHLANGA PROJECTS

## COMPANY PROFILE



IHLANGA Projects is organized to strategize and oversee services via effective project execution and management. This involves strategic assessment, asset management, financial oversight, technical approval, client handover, and end-user transition.



# COMPANY OVERVIEW

IHLANGA PROJECTS is a 100% Black Owned Organisation, with a tailor-made client solution driven approach to achieve the socio-economic objective of trade and industry with a developmental approach in order to uplift, empower and fulfil Business empowerment needs, with a solid strategic transformative agenda to organizational service delivery.

#### **Est .2016**

Reg no: 2016 / 544410 / 07

VAT number: 4560280465

BBBEE Contribution Level: Level 2, Black Ownership: 100, BBBEE Procurement Level: 125

#### **Accreditations**

Global Roofing Solutions (Compliant, KLIP-TITE & BROWNBUILT SHEETING Installer)

NHBRC Accredited

CIDB Grading: SL(4), SN(4)

GBCSA

# TABLE OF **CONTENTS**

---

- Our History
- Our Team
- Our Vision and Mission
- Our Values
- Our Service
- Get In Touch

A photograph showing three construction workers in white protective suits and hard hats working on a large steel structure, likely a roof or industrial facility. The workers are positioned on a grid of steel beams. The background shows a clear sky and some distant structures. The image is partially obscured by a large red diagonal shape on the left side of the page.

# OUR HISTORY

---

IHLANGA Projects was established in 2016. The company was established to provide full projects and maintenance solution i.e. execution, Supervision and management. Our scope is facilities maintenance, construction, Structural and canopy infrastructure construction and repairs, civil works, Electrical installation and repairs and plant hire. The company seeks for opportunities in the diverse industry areas i.e. petrochemical industry, public and private sector services and projects, commercial properties and construction, residential estates and mining.

IHLANGA Projects team has the experience and expertise to provide independent and confident Project execution and Management, Maintenance execution and management services in various areas of expertise. Our flexible approach and paying attention to detail ensure that our clients' objectives are successfully achieved.

Prior to project commencing we demand assessment and scope communication and agreement with our clients, and post execution inspection, commissioning & testing and sign off with the client at every job we do. We put the before and after execution evidence at the top of our priority to ensure the client has appreciation of our service and value add. At IHLANGA Projects we collaborate very well with specialized expertise when needed on project for the successful execution, we always put our client requirements first and always give objective contribution and guidance.



# Our Team



## **Mr. Thamsanqa Dube**

*Founder & Managing Director*

- BSc Chemical Engineering (UCT)
- Post Graduate Diploma in Project Management (Univ. of Stell. Business School).
- Over 10yrs extensive experience in Maintenance and Project within the Petrochemical industry.
- Companies: Maintenance engineer @BP Southern Africa; Maintenance engineer @Total Energies; Regional Ops Manager @Pragma (Shell FMC); Regional Maintenance Manager @Puma Energy (responsible for 16 countries in Africa).

## **Mr. Reuben Mofokeng**

*HSSE and Compliance Manager*

- Bachelor of Arts in Disaster and Safety management
- SHE Incident Investigation certificate
- SAMTRAC Certificate

## **Mr. Thokozani Dube**

*Quality and technical Manager*

- National Diploma: Building (Cape Peninsula University of Technology),
- Post Graduate Degree in Comprehensive Project Management (University of Pretoria)
- Bachelor of Tech in Construction Management (Tshwane University of Technology)
- Professional Construction Project Manager (SACPCMP) certification.
- Over 10yrs extensive experience in Project management within construction.
- Companies: Project Manager @Gauteng Department Of Infrastructure Development.

## **Ms. Pertunia Mohlafase**

*Admin and Marketing*

- Bachelor of Administration

## **Mr Katlego Malapela**

*Finance Manager Consultant*

- National Diploma in Accounting

Ihlanga Projects is powered by a team of 24 permanent employees, ensuring consistent expertise, reliability, and hands-on delivery across all our projects.



# OUR VISION & MISSION

---

## VISION

Our vision is to provide and assure Excellency and commitment in every project and collaboration we engage in. We seek to partner with key and like-minded business partners to create enabling job opportunities, and develop skills needed for the current and future economic needs especially for previously disadvantaged people from all kind of backgrounds. Young and committed people are at the forefront of our agenda.

## MISSION

Our mission is to build a cohesive and enabling relationship with our clients. To comply with safety standards and requirements in order to jointly realise:

- Safe execution of projects through compliance with HSSE and control of works requirements. Prevention of avoidable incidents is always at the forefront of our project planning and execution.
- Communicate project execution phases to the client timeously. Ensuring the client follows the journey of their investment even when they are not present at site all the time.
- Comply with procurement requirements and adopt client's good ways of working. Ensuring Continuous improvement in performance, HSEQ grading and evaluation.
- To create a culture of planning of activities with our clients, and actively optimize costs and always giving objective view.



# OUR VALUES

## VALUES

To be committed at every project we do and getting it done as agreed with the client. Always allow flexibility as per project needs and unforeseen changes.

- Cherish and uphold our reputation as professionals and industry players.
- Uphold transparency and collaborate in good faith with all stakeholders and business partners.
- Enabling our staff member's competency through professional and industry training. Allowing our people to acquire life long-lasting skills and competency that prepare them for future and independent participation in various markets and industry.

## SAFETY AND QUALITY

At IHLANGA Projects reputation is everything. We are dedicated to preserving our valued reputation through development, implementation and maintenance of quality control, and the quality assurance measures which comply with client and industry standards. Three critical aspects of our delivery:

- HSEQ – We say NO to any works compromising HSEQ for the workforce, equipment, community and environment. No matter where the instruction comes from. All HSEQ risk must be addressed to as low as reasonably practicable (ALARP). This is before, during and after every project execution.
- Quality and Workmanship – We adhere to specification guidelines. We respect workmanship quality and we own up to our service.
- Feedback – We take feedback very seriously and apply it to our continuous improvement programs.

# OUR SERVICES

## IHLANGA PROJECTS

IHLANGA Projects has the structure in place to plan and control the services provided through sound project execution and management principles, Strategic appraisal, asset management, financial control, technical sign off, handover to client and handover to end user. Through our customercentric approach, we offer customized Assets and Facilities Maintenance services that are cost effective and deliver value to the clients. We undertake activities in the Project execution & Management, Canopy & Structural Construction and Repairs & Civils works, Facilities Maintenance & Renovation, Installations and Plant hire. IHLANGA Project's principal services include the following:



# OUR SERVICES



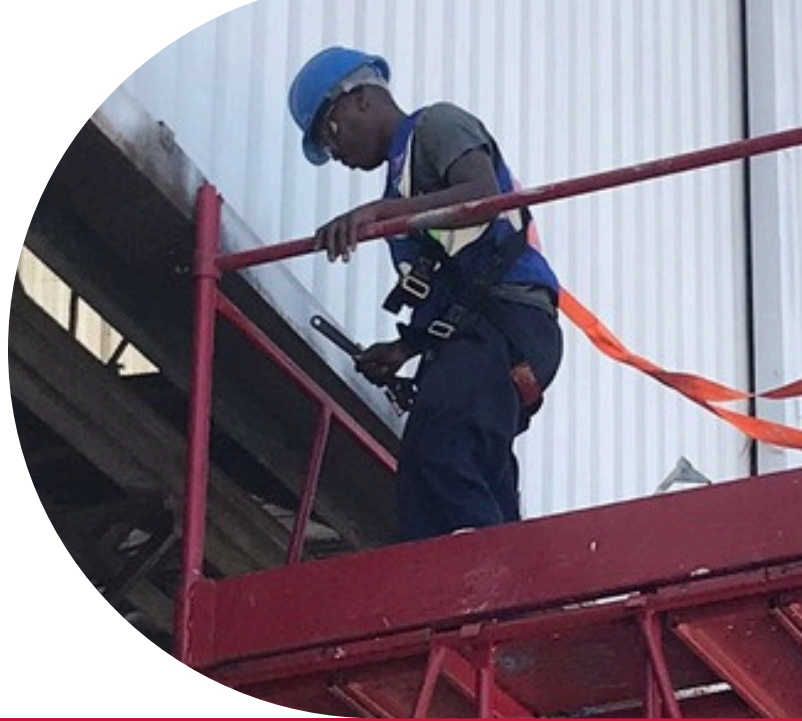
## FACILITIES MAINTENANCE AND MAINTENANCE

### PROJECTS

We ensure equipment reports and failure root cause analysis at every job.

- Building Repairs and Renovations (Tiling, Painting, Plastering, roof and slab waterproofing).
- Office & Shop Renovation (Carpentry, Tiling & fittings, temporal wall structures, partitioning structures, Upgrades).
- Gutters and Storm Water Drainage.
- Yard fencing and repairs.
- Signage (canopies, interior & exterior bulkheads, fabricated letters, flat cut-out faces, panels, display panels & illuminated boxes).
- Plumbing (Structural Plumbing, geyser, toilets, and irrigation).
- Facilities Deep Cleaning & Reconditioning.
- All General Maintenance Activities.
- Dedicated Team on sites for customized services.

# OUR SERVICES



## CIVIL AND CONSTRUCTION

- Structural Construction (Commercial and Non-Commercial Infrastructure – new Buildings, Extension, Knock down Rebuild (KDR). etc.)
- Drainage Works (storm and foul water, borehole, septic tank, separator pit, canopy and MID/TOTEM, fat trap)
- Surface surfacing & Resurfacing Work (Paving, Tar & Concrete etc.)
- Water Retaining Structures.
- Waste Management and disposal.
- Plant hire (construction rubble removal, hazardous waste removal and disposal, TLB hire, structural propping).

# OUR SERVICES



## **HIGH PRESSURE CLEANING ACTIVITIES**

- High pressure cleaning & Jetting
- Vacuum sucking and cleaning of slurry
- Crushing and screening of hard lump material
- Manual Cleaning Activities
- Plant / Quarry Cleaning (Dust management, Grass cutting, Gardening & office cleaning)
- Water Pumping activities.
- Waste Upliftment, transportation, removal and disposal (certification)
- Deep Cleaning & Adhoc

### **The services covered in the scope of work include following areas:**

- Roads and walkways
- Slurry tanks
- Pipeline
- Thickeners and other vessels / tanks
- Depot Tanks and Tankers
- Storm water dams/drains
- Sceptic tanks
- Warehouse
- Industrial & Offices
- Office / High story building Glass

# OUR SERVICES



# OUR SERVICES



## FORECOURT CANOPY AND STRUCTURAL INFRASTRUCTURE CONSTRUCTION, INSTALLATION AND REPAIRS

- Paintworks on Steel Structures
- Structural decommissioning
- Roof sheets installation
- Gutter Installation
- Construction / Commissioning/ Handover
- Earth and Civil Works
- Structural Steel Works
- New Canopy Works
- Warranty Duration
- Roof Gradient Repairs (using wood or steel packers)

# OUR PROJECTS



# OUR CLIENTS



# GET IN TOUCH

OUR TECHNICAL, TRADESMAN AND HSEQ TEAMS CAN ESTABLISH AND INTERVENE ON SITE WITHIN AGREED SERVICE LEVEL AGREEMENT (SLA 8-24HRS) IN ANY OF THE LOCATIONS BELOW. THIS IS APPLICABLE FOR PROJECTS, ADHOC MAINTENANCE AND EMERGENCIES.

## CONTACT US :



012 645 1883  
078 788 8808  
067 012 2680



068 818 0027



[www.ihlangaprojects.co.za](http://www.ihlangaprojects.co.za)



[projects@ihlangaprojects.co.za](mailto:projects@ihlangaprojects.co.za)  
[maintanance@ihlangaprojects.co.za](mailto:maintanance@ihlangaprojects.co.za)  
[ihlangaprojects@gmail.com](mailto:ihlangaprojects@gmail.com)



116 Modderfontein Road,  
President Park,  
Midrand, 1685



**Gauteng:** Pretoria, Johannesburg, Ekurhuleni, Sedibeng, West Rand

**KwaZulu Natal:** Richards Bay, Durban, Newcastle, Port Shepstone, Pongola, Pietermaritzburg

**Limpopo:** Polokwane, Tzaneen, Phalaborwa, Lephalale, Bela Bela, Mokopane, Thabazimbi

**Mpumalanga:** Nelspruit, Middelburg, Emalahleni, Ermelo, Hazyview, Secunda

**North West:** Mafikeng, Rustenburg